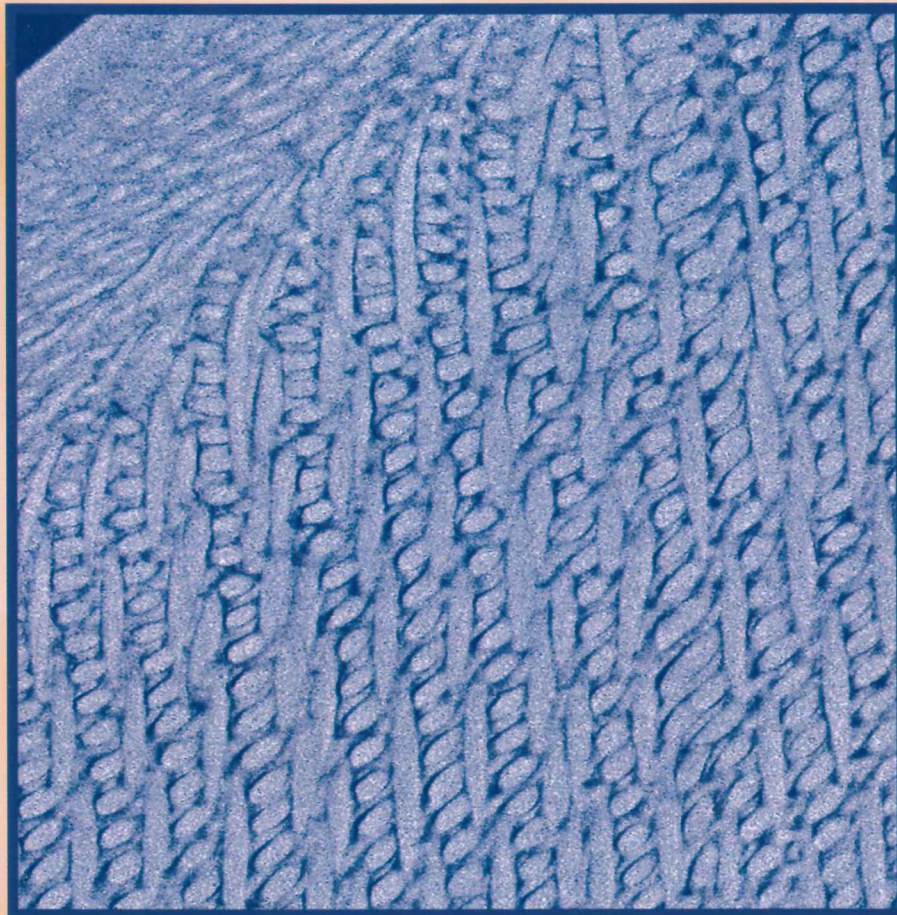



Volume 166, issue 2, MAY 2009

ISSN 1047-8477

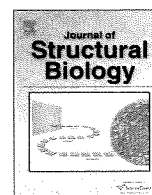
Journal of Structural Biology



Available online at www.sciencedirect.com

 ScienceDirect

Paper of the Year



Volume 166, Issue 2, May 2009

CONTENTS

Announcement

Paper of the Year Award 113

Regular Articles

Maneesha E. Andrews, N. Mohammed Inayathullah, Rajadas Jayakumar, E.J. Padma Malar. Conformational polymorphism and cellular toxicity of IAPP and β AP domains 116

William T. Baxter, Robert A. Grassucci, Haixiao Gao, Joachim Frank. Determination of signal-to-noise ratios and spectral SNRs in cryo-EM low-dose imaging of molecules 126

Elia Beniash, Rebecca A. Metzler, Raymond S.K. Lam, P.U.P.A. Gilbert. Transient amorphous calcium phosphate in forming enamel 133

Carlos Bazán, Michelle Miller, Peter Blomgren. Structure enhancement diffusion and contour extraction for electron tomography of mitochondria 144

Misjaël N. Lebbink, Elly van Donselaar, Bruno M. Humbel, Louis O. Hertzberger, Jan Andries Post, Arie J. Verkleij. Induced membrane domains as visualized by electron tomography and template matching 156

Brad C. Bennett, Qun Wan, Md Faiz Ahmad, Paul Langan, Chris G. Dealwis. X-ray structure of the ternary MTX-NADPH complex of the anthrax dihydrofolate reductase: A pharmacophore for dual-site inhibitor design 162

Robert C. Ford, Anne L. Brunkan-LaMontagne, Richard F. Collins, Bradley R. Clarke, Robert Harris, James H. Naismith, Chris Whitfield. Structure-function relationships of the outer membrane translocon Wza investigated by cryo-electron microscopy and mutagenesis 172

Hind A. AL-Khayat, Edward P. Morris, John M. Squire. The 7-stranded structure of relaxed scallop muscle myosin filaments: Support for a common head configuration in myosin-regulated muscles 183

Craig Boote, Sally Hayes, Robert D. Young, Christina S. Kamma-Lorger, Paul M. Hocking, Ahmed Elsheikh, Chris F. Inglehearn, Manir Ali, Keith M. Meek. Ultrastructural changes in the retinopathy, globe enlarged (*rge*) chick cornea 195

Continued

Front Cover: Mature dental enamel a highly crystalline nanostructured structure, begins as a network of amorphous mineral particles suspended in a protein gel. SEM image of polished enamel section in a backscattered electron mode. See the article by Beniash et al. in this issue.

For a full and complete Guide for Authors, please go to: <http://www.elsevier.com/locate/yjsbi>

Abstracted/indexed in Biological Abstracts, Chemical Abstracts, Current Contents/Life Sciences, EMBASE, EMBiology, Excerpta Medica, MEDLINE Research Alert, SCISEARCH, Science Citation Index. Also covered in the citation database SCOPUS. Full text available on ScienceDirect.

